

CHURCHES
LOCATED ON GARDEN STREET

Temple Adath Emuno

On Garden Street between 6th and 7th Streets

Holy Trinity English Lutheran Church

On the Corner of Garden and Tenth Street

NEW JERSEY OFFICE OF HISTORIC PRESERVATION HISTORIC SITES INVENTORY #12
STREETSCAPE SURVEY FORM

STREET NAME: Garden Street
MUNICIPALITY: Hoboken

CROSS STREETS: Observer Hwy. & Newark Street
COUNTY: Hudson

DESCRIPTION/SIGNIFICANCE:

7 residential buildings remain with intact storefronts on WEST SIDE of Street.
At least 1/2 of the two sides of the street (mostly the portion along the Highway) are vacant.

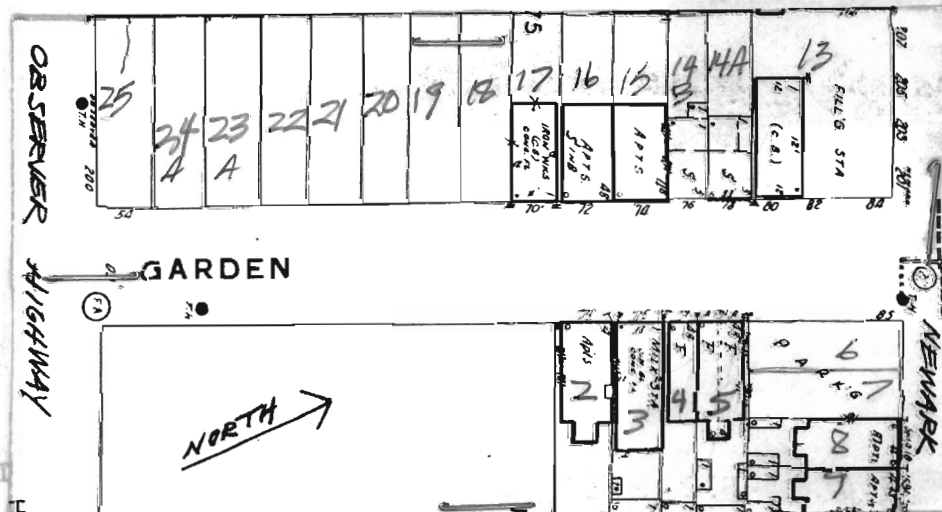
Corner S.E. at Newark Street is vacant - Fences at parking lot.
Gas Station at S.W. corner

PHYSICAL CONDITION OF SITES: Excellent 70 % Good 30 % Fair % Poor %
REGISTER ELIGIBILITY: Yes ☐ Possible ☐ No ☐ Part of larger district ☒
THREATS TO SITE: Roads ☐ Development ☐ Zoning ☒ Deterioration ☐
No Threat ☐ Other ☐
COMMENTS:

Zoned Commercial

REFERENCES:

MAP (Indicate North)



INDIVIDUAL SITES:

CROSS STREETS: COUNTY: STREET NAME: MUNICIPALITY:

EAST SIDE

73,77,79 - residential - brick 4 story x 3 bays - intact cornices.
77,79 have intact rail and fences - 75 garage

WEST SIDE

- 70 - garage
- 72 - 4 story x 4 bay residential - brick, altered 1st storey window
- 74 - 4x4 brick
- 76 - wood frame with asphalt (false brick) sheathing - storefront intact
- 78 - brick - storefront intact - "Galaad Pentecostal Church, Inc."

STREETSIDE BLOCK

INDIVIDUAL SITES:

PHYSICAL CONDITION OF SITES: Excellent ☒ Good ☒ Fair ☒ Poor ☒
REGISTER ELIGIBILITY: Yes ☒ Possible ☐ No ☐ Part of larger district ☐
THREATS TO SITES: Roads ☐ Development ☐ Zoning ☐ Deterioration ☐
No Threat ☐ Other ☐
COMMENTS:

MAP (Indicate North)

REFERENCES:

RECORDED BY:

ORGANIZATION:

DATE:

NEW JERSEY DEPARTMENT OF ENVIRONMENTAL PROTECTION
DIVISION OF PARKS & FORESTRY
JERSEY CITY, NEW JERSEY 07310
(201) 261-3032

WEST SIDE



Observer Highway to Newark
(Vacant)
neg. #: 7-1



70 Garden Street
neg. #: 7-2

photo date: 9-5-78

WEST SIDE



72 Garden Street
neg. #: 7-3



74 Garden Street
neg. #: 7-4

WEST SIDE



76, 78 Garden Street
neg. #: 7-5



Garden
(West Side at Newark)
neg. #: 7-6

photo date: 9-5-78

EAST SIDE



73 Garden Street
neg. #: 9-1



79, 77 Garden Street
neg. #: 9-3



75 Garden Street
neg. #: 9-2

NEW JERSEY OFFICE OF HISTORIC PRESERVATION HISTORIC SITES INVENTORY
STREETSCAPE SURVEY FORM

STREET NAME: Garden Street
MUNICIPALITY: Hoboken

CROSS STREETS: Newark and First Streets
COUNTY: Hudson

DESCRIPTION/SIGNIFICANCE:

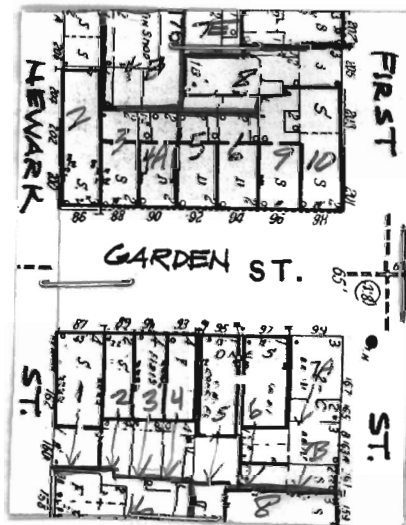
Residential with bars and stores on first floor. Most of WEST SIDE is 2 stories. EAST SIDE 1-4 stories in height and great variation in materials

WEST SIDE has several rowhouses with stepped parapets that have c. 1930 style and are probably alterations of older facades.

PHYSICAL CONDITION OF SITES: Excellent % Good 55 % Fair 45 % Poor %
REGISTER ELIGIBILITY: Yes [] Possible [] No [] Part of larger district [X]
THREATS TO SITE: Roads [] Development [] Zoning [] Deterioration []
No Threat [X] Other []
COMMENTS:

REFERENCES:

MAP (Indicate North)



INDIVIDUAL SITES:

EAST SIDE

- 87 - El Encanto Bar - Brick 4 stories x 3 bays - storefront and top cornice intact .
89 - 2 stories
91-93 - with fire escape - each 4 stories x 2 bays originally brick but sheathed with asphalt false brick - 93 - permastone first story
95-97 - Permastone first story - Pueblo Supermarket
99 - Bar - Permastone first story - 2nd and 3rd stories are aluminium siding.

WEST SIDE

- 86 - Bar first story with altered brick facade. 3 stories x 3 bay facade, Brick front and cornice intact.
88 - 2 stories - cornice intact - recessed window panels (plaster-like brick surrounds) - first story has multicolor sheathing (Celebrity Lounge)
90-94 - three 2 story x 3 bay building - step parapets - brown brick facade. Circa 1925.
96 - similar upper details as 88 - intact door framing and storefront and top cornice. Suggests original character of street
98 - Pancho's Liquors - Red brick - intact storefront cornice - note brick work at lower cornice line and at 2nd story.

STREETSIDE BLOCK

INDIVIDUAL SITES:

PHYSICAL CONDITION OF SITES: Excellent X Good X Fair X Poor X
REGISTER ELIGIBILITY: Yes [] Possible [] No [] Part of larger district []
THREATS TO SITE: Roads [] Development [] Deterioration []
No Threat [] Other []
COMMENTS:

MAP (Indicate North)

REFERENCES:

RECORDED BY:
ORGANIZATION:

DATE:

(903) 363-3032

08052

NEW JERSEY DEPARTMENT OF ENVIRONMENTAL PROTECTION, DIVISION OF PARKS & FORESTRY

WEST SIDE



86, 88, 90 Garden Street
neg. #: 7-7



92, 94 Garden Street
neg. #: 7-8



94, 96, 98 Garden Street
neg. #: 7-9

EAST SIDE



99, 97, 95 Garden Street
neg. #: 9-6



93, 91 Garden Street
neg. #: 9-5



89, 87 Garden Street
neg. #: 9-4

NEW JERSEY OFFICE OF HISTORIC PRESERVATION HISTORIC SITES INVENTORY NO.: STREETSCAPE SURVEY FORM

STREET NAME: Garden Street

CROSS STREETS: First St. and Second St.

MUNICIPALITY: Hoboken

COUNTY: Hudson

DESCRIPTION/SIGNIFICANCE:

Basic character is residential with corner storefronts at First Street.

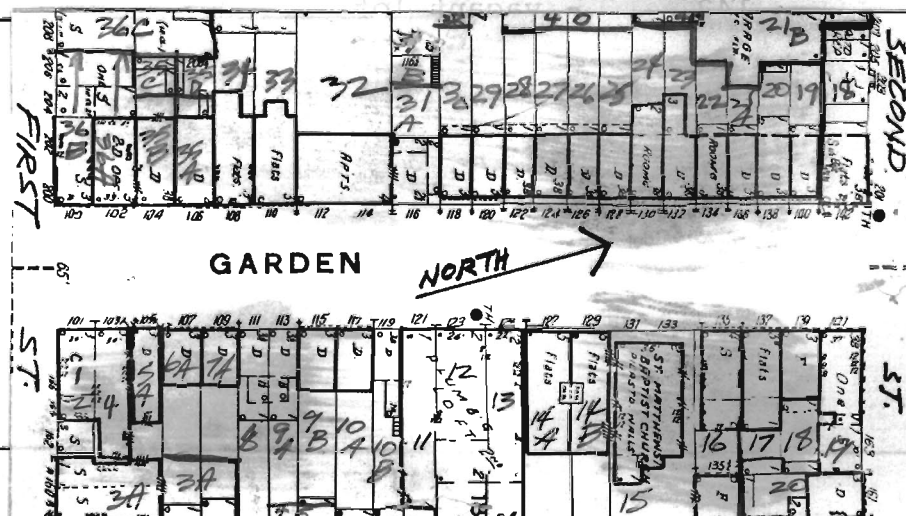
Basic units average 3 stories and 3 bays with other sizes mixed in.

Material: Brick, often painted - some false brick and permastone as well.

Intact doorways - 108, 110, 115(?), 130, 132

PHYSICAL CONDITION OF BUILDINGS: Excellent 70 % Good 20 % Fair 10 % Poor %REGISTER ELIGIBILITY: Yes Possible No Part of Larger District XTHREATS TO STREET: Roads Development Zoning Deterioration
No Threat X Other

COMMENTS: Some painting needed, occasional stucco deterioration

MAP:
SLIDES:
REFERENCES:RECORDED BY:
ORGANIZATION:

STREETSIDE BLOCK EAST SIDE

INDIVIDUAL SITES:

- 101-103 - Intact cornice on building of double width with storefront cornice.
- 105 - White brick with green Spanish tile, (3 x 3)
- 107-109 - Brick double row house, each 3 x 3 with high basement.
- 111-113 - Two smaller scale buildings - 111 with tin false brick sheathing - 113 permastone. Roof beams visible, obviously in poor condition.
- 115-117 - 3 x 3 - original stone but latter altered with false brick and permastone.
- 119 - Like 111 and 113 in scale but higher basement.
- 121-125 - "Cullen Building" - c. 1930 - 2 story with garages, parapets.
- 127-129 - First is 4 bays - 2nd is 2 bays - 5 story tenements.
- 131-133 - Church - Gothic - now used as a residence (see individual form).
- 135 - Storefront - similar to next 3 buildings - storefront intact, pilasters, cast iron.
- 137-141 - matching style, 3 x 3. Intact cornices. 139 - applied false brick. 141 - altered corner storefront.

STREETSIDE BLOCK WEST SIDE

INDIVIDUAL SITES:

- 100-102 - 3 x 5, altered with permastone and brick.
- 104-110 - Brick, 3 stories x 3 bays - doors intact at last two addresses - cornice stripped at 110. Metal stars indicate tie rods at 108.
- 112-114 - 4 x 7, apartment house - false brick with cast iron pillars imbedded in new brick in first story segmental arch lintels.
- 116 - 3 x 3, permastone with one bay extension on right side.
- 118-140 - 3 x 2, appear to have been part of one continuous row in spite of permastone and stepped parapets of 128-134 - note 118 protrudes out from facade plane of block and two cornices that indicate same effect must have occurred at 128 (now stripped of cornice). 122, 126, 130 have paired arched windows in 1st story.
- 142 - vacant lot.

RECORDED BY: J. Sholeen & Wm. Faciano
 ORGANIZATION: Community Development Agency

DATE: August 1978

WEST SIDE



100-102 Garden St.
neg. # 7-10



104, 106 Garden St.
neg. # 7-11



108, 110 Garden St.
neg. # 7-12



112, 114 Garden St.
neg. # 7-13

photo date: 9-5-78

WEST SIDE



116, 118, 120 Garden St.
neg. # 7-14



122, 124, 126 Garden St.
neg. # 7-15



128, 130, 132, 134 Garden St.
neg. # 7-16



134, 136, 138, 140 (lot) Garden St.
neg. # 7-17

EAST SIDE



141, 139 Garden St.
neg. # 9-14



137, 135 Garden St.
neg. # 9-13



129, 127 Garden St.
neg. # 9-11



125-121, 119 Garden St.
neg. # 9-10

photo date: 9-7-78

EAST SIDE



117, 115, 113 Garden St.
neg. # 9-9



111, 109 Garden St.
neg. # 9-8



107 Garden St.
neg. # 9-8



105, 103-101 Garden St.
neg. # 9-7

NEW JERSEY OFFICE OF HISTORIC PRESERVATION HISTORIC SITES INVENTORY # 9-12

INDIVIDUAL STRUCTURE SURVEY FORM

HISTORIC NAME: St. Matthew Baptist Church **COMMON NAME:** (private home)

LOCATION: 131-33 Garden Street **BLOCK/LOT:** 188/15

MUNICIPALITY: Hoboken

COUNTY: Hudson

OWNER/ADDRESS: Mr. & Mrs. M. Garfinkel

131-133 Garden St.

ORIGINAL USE: Church

PRESENT USE: Residence

USGS QUAD:

DESCRIPTION

Construction Date: c. 1880-1890

Source of Date: visual inspection

Architect:

Builder:

Style: Gothic

Number of Stories: Two

Foundation:

Form/Plan Type:

Structural System:

Exterior Wall Fabric: Red and white painted brick, stucco

Fenestration: Two small bays flank large one; 5 bays on side with buttresses

Entrance Location: street level, central

Roof/Chimneys:

Additional Architectural Description:

Arched fenestration on first and second floors; arches round first story, pointed on second; lancet window at center obviously filled in.

Note diagonal axis of corner buttresses.

Stained glass windows survive, as well as a baptismal font and



MAP (Indicate North)

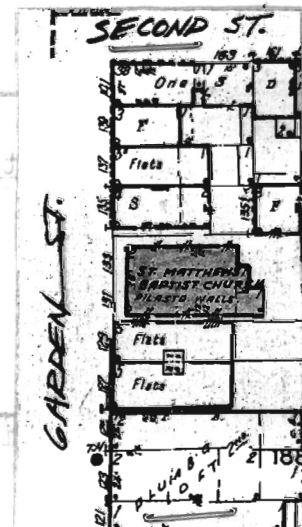


photo date:
9-7-78

(609)292-2023

08625

NEW JERSEY

109 WEST STATE STREET,

OFFICE OF HISTORIC PRESERVATION, NEW JERSEY

SITING AND RELATED STRUCTURES:

Middle of residential block; narrow spaces between church and adjoining buildings.

Stylistically related to Trinity Evangelical Lutheran Church (1890), at 9th & Clinton, and to the Temple Adas Emuno building, at Bloomfield & 5th (1885).

SURROUNDING ENVIRONMENT: Open Space ☐ Woodland ☐ Scattered Buildings ☐
Suburban ☐ Urban ☐ Residential ☒ Agricultural ☐ Industrial ☐
Downtown Commercial ☐ Highway Commercial ☐ Other ☐

SIGNIFICANCE:

An important example of late 19th century religious buildings, which is stylistically related to at least two other religious structures. More research should be done into the origins of the congregation that constructed the building, and the architect who designed it. The present owners are hoping to restore the exterior of the building.

PHYSICAL CONDITION: Excellent ☐ Good ☒ Fair ☒ Poor ☐
REGISTER ELIGIBILITY: Yes ☒ Possible ☐ No ☐ As part of district ☐
THREATS TO STRUCTURE: Roads ☐ Development ☐ Zoning ☐ Deterioration ☐
No Threat ☐ Other ☐
COMMENTS:

Exterior badly needs paint

REFERENCES:

The Bicentennial Comes to Hoboken,
J. Heaney - congregation eventually moved to Jersey City

RECORDED BY: William Fasciano
ORGANIZATION: July 20, 1978
DATE: CDA

P. Florio
11/80

NEW JERSEY OFFICE OF HISTORIC PRESERVATION HISTORIC SITES INVENTORY #
STREETSCAPE SURVEY FORM

STREET NAME: Garden Street
MUNICIPALITY: Hoboken

CROSS STREETS: Second and Third Streets
COUNTY: Hudson

DESCRIPTION/SIGNIFICANCE:

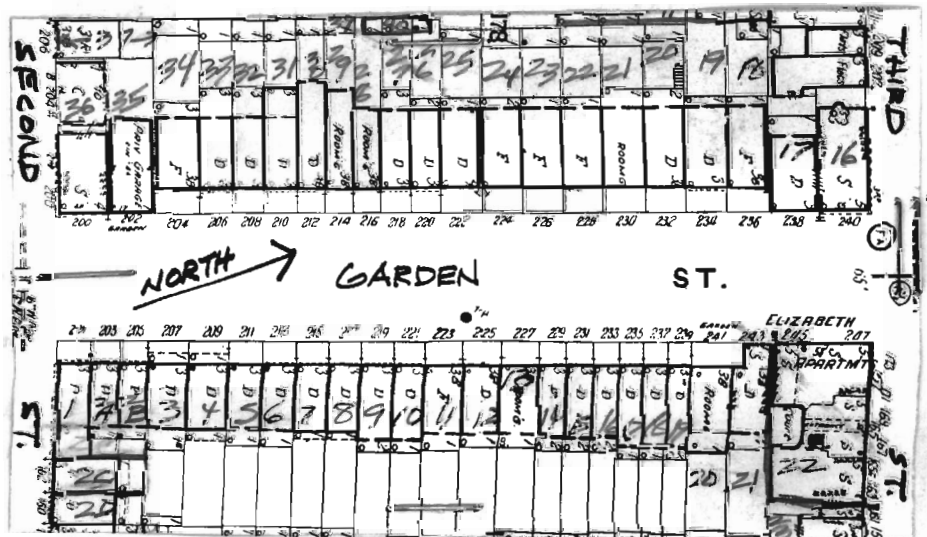
The primary character of this block is residential with 2 and 3 bay buildings of three story height. There are four and five story buildings at the corner lots (except at the south end of the east side). The buildings show evidence of being multi-family units and there are 11 buildings with fire escapes on the front facade, indicating that there is more than one resident unit per floor.

75% of the cornices, stair rails and fences are intact, as are a large number of lintels (although most are now shaved flush with the facade). Stoops are fairly high in the majority of cases with some basement stories being particularly tall on the east side. Both sides of the street are basically consistent in terms of height, thereby creating a unified look except at the aforementioned corner lots. Most areas in front of individual units are enclosed by metal fences and are usually concrete paved. Some still have plantings and there are a number of trees of various sizes both on these areaways and along the street curbs. 204-36 on west side are set back further than buildings at end of block, as 201-243 set back further than 245.

PHYSICAL CONDITION OF SITES: Excellent 60% Good 35% Fair 5% Poor %
REGISTER ELIGIBILITY: Yes ☐ Possible ☐ No ☐ Part of larger district ☐
THREATS TO SITE: Roads ☐ Development ☐ Zoning ☐ Deterioration ☐
No Threat ☐ Other ☐
COMMENTS:

REFERENCES:

MAP (Indicate North)



EAST SIDE

STREETSCAPE SURVEY FORM
NEW JERSEY OFFICE OF HISTORIC PRESERVATION HISTORIC SITES DIVISION

STORY X BAY (X)

STOREFRONT (S.F.)

- 201 2x3, intact lintels, cornice. Firescape in side facing Second Str. Fence curves around corner and runs down side of building.
- 203,05 3x2, slightly lower in height than neighbors. Lintels in both third stories are over door at 203. Full length windows with curved wrought iron railings in second story. 205, intact door.
- 207,09 Two 3x3 units. 207, basically intact with elaborate wrought iron veranda with round arched openings; intact cornice. 209, permastone basement with aluminum siding above.
- 211,13 Two 3x2 units. 211, altered first story fenestration; no cornice. 213, brick veneer, altered first story fenestration; cornice matches that at 207.
- 215,17 Two narrow 3x3 units with segmented arch lintels and fine four bracket cornices. Full length first story windows and doorway intact at 217.
- 219,21 Two 3x2 units. 219, applied false brick, mottled color. Both cornices match 215-17 but have only three brackets.
- 223-27 Three 3x3 units with intact lintels (except in altered first story fenestration and doorway at 227). Slightly lower height than preceding units. Cornices intact have scrolling and egg and dart moldings. Fire escapes at 227.
- 229-33 Three 3x2 units with detailing that matches 223-27. Intact full-length second story windows at 229. Intact doorways at 229 and 233.
- 235-39 Three 3x2 units. Only 239 is intact with segmental arch lintels with upturned ends and cornices. 235 has altered window outlines, with round-arched windows in third story; 237, permastone, covered cornice and intact doorway.
- 241,43 Two 3x3 units. Both cornices intact. Fire escape at 241. 243 has basement entry (an alteration) and one story addition out from base.
- 245 Large 5x5 Classical Revival apartment building. First story stone with brick above and fire escapes on both street sides. Articulated voussairs, oriels and bays and festoons in lintels over middle fifth story windows. Set out further toward street than remainder of block.

WEST SIDE

- 200-02 Connected 4x3 (200) and one story (202) buildings used as Ranieri furniture warehouse and Barrilito Lounge. 200 is permastone and applied false brick.
- 204 3x3 intact stair rail. Fire escape.
- 206-10 Three 3x2 units, all altered; only cornice at 208 remains intact. 206, permastone. 208,10, applied false brick.
- 212-20 Five 3x2 units. All cornices intact with four brackets (two paired at middle) and dentils. Lintels intact at 212 and 220. Intact full-length second story window at 214. Fire escape at 214 and 218. 216 has open yard.
- 222-28 Four 3x3 units with intact paired brackets (two and two half pairs per unit). Intact lintels in second and third stories at 226 and third story at 228. 222 and 224 have the rods and large trees in front. 222 has open yard.
- 230-36 Four 3x3 units, slightly taller than units to south. Intact second story lintels at 230,32,34. Basically intact. 236 has applied false brick. Fire escape at 236.
- 238 3x3 closer to street than 204-34 units. Intact cornice with modillions.
- 240 5x4 Italianate with altered S.F. (The Two Friends); heavy second and fourth story lintels; segmental arch fifth story lintels and massive console bracketed cornice

WEST SIDE



200, 202, 204 Garden St.
neg. # 7-18



206, 208, 210, 212 Garden St.
neg. # 7-19



214, 216, 218, 220 Garden St.
neg. # 7-20



222, 224, 226 Garden St.
neg. # 7-21

photo date: 9-5-78

WEST SIDE



228, 230, 232 Garden St.
neg. # 7-22



234, 236, 223 Garden St.
neg. # 7-23



238, 240 Garden St.
neg. # 7-24

photo date: 9-5-78

EAST SIDE



247-245, 243, 241 Garden St.
neg. # 9-22



243, 241, 239 Garden St.
neg. # 9-21



237, 235, 233, 231, 229 Garden St.
neg. # 9-20



227, 225 Garden St.
neg. # 9-19

photo date: 9-7-78

EAST SIDE



223 Garden St.
neg. # 9-19



221, 219, 217, 215 Garden St.
neg. # 9-18



213, 211, 209 Garden St.
neg. # 9-17

photo date: 9-7-78



207, 205 Garden St.
neg. # 9-16

EAST SIDE



209, 207, 205, 203, 201 Garden St.
neg. # 9-15

photo date: 9-7-78

NEW JERSEY OFFICE OF HISTORIC PRESERVATION HISTORIC SITES INVENTORY #
STREETSCAPE SURVEY FORM

STREET NAME: Garden Street
MUNICIPALITY: Hoboken

CROSS STREETS: Third and Fourth Streets
COUNTY: Hudson

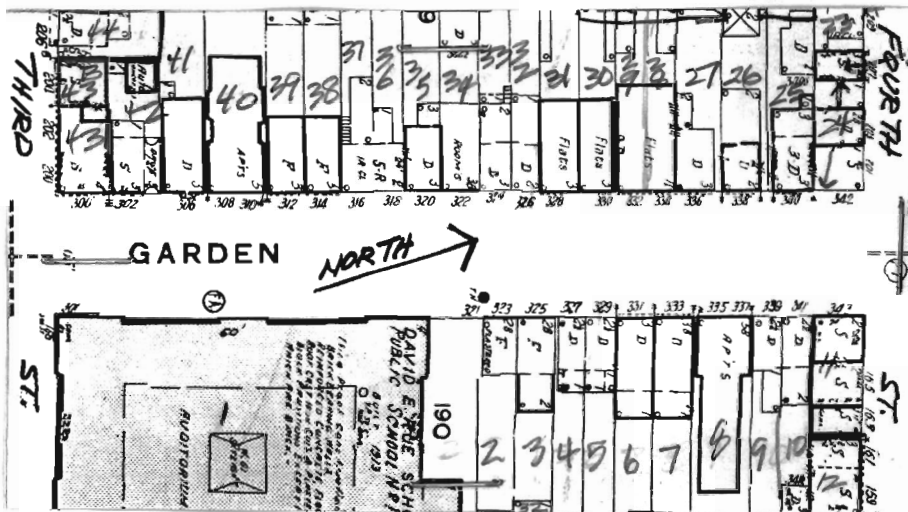
DESCRIPTION/SIGNIFICANCE:

This block has diverse types and sizes of buildings with many intact stair rails, fences and cornices. The total streetscape is not particularly intact or homogeneous but has a number of finely detailed buildings including some four and five story ones on the west side, one five story tenement on the east side and the massive four story David E. Rue School in 20th Century Jacobean Style that takes up the south half of the east side. Scattered two and three story buildings are on both sides and are in various states of intactness.

PHYSICAL CONDITION OF SITES: Excellent 30% Good 40% Fair 30% Poor %
REGISTER ELIGIBILITY: Yes ☐ Possible ☐ No ☐ Part of larger district ☒
THREATS TO SITE: Roads ☐ Development ☐ Zoning ☐ Deterioration ☒
No Threat ☐ Other ☐
COMMENTS:

REFERENCES:

MAP (Indicate North)



EAST SIDE

__STORY, __BAY (__X__)

STOREFRONT (S.F.)

- 301-21 David E. Rue School (see individual form) with fenced yard at
323,25 Two 2x3 units. Original styling is uncertain. 323, has Egyptian
esque "pylon" effect around windows and doorway and a sloping
roof. Intact cornice. 325, is perma stone with a new cornice
replacement in modern materials and a flat roof.
- 327,29 Two 2x3 units may have matched originally. 327 now has applied
false brick and a sloping roof, suggesting a Federal-style outline
but more likely a worker's cottage type. 329 is completely altered
with brick veneer, new fenestration and a brick parapet and flat
roof.
- 331,33 Two 3x3 Italianate rowhouses in applied false brick. The fenestra-
tion has been completely altered in 329 to picture window type.
335 5x5 orange brick Italianate with stripped cornice but intact lintel
and coursework. Lintels have articulated keystones and courses run
at sill level. A (terra cotta?) course runs below the fifth story
sills and a brick course curves up and around the round-arched
fifth story windows. Fire escape.
- 337,39 2x3, similar in scale to 331,33 and may have matched them origin-
ally. Both have dormers; the one on 331 is wider and has two
windows, that 333 has only one. 331 is perma stone. 333, aluminum
siding and picture windows.
- 341 Intact 2x3 corner building with 4 bays on Fourth Street. Fairly
intact protruding S.F. that wraps around corner. Soldier-set brick
lintels and simple cornice.

WEST SIDE

- 300 Elaborate 4x4 Italianate with five bays on Third Street. Intact
S.F. cornice, with display galss somewhat altered. Small S.F. also
at left rear. Fire escape on Third Street. Brown (painted?) bands
in second story brick. Heavy bracketed lintels in second and fourth
stories that is corbelled out above second story pediment lintels
in third story. Cornice has two steep pediments facing Third Street.
- 302,04 3x4 Italianate with altered first story on left (302) side but
intact garage door at right. Lower cornice. Intact lintels. Massive
bracketed cornice with modillions.
- 306 3x3 altered first story; intact lintels, cornice removed.
- 308,10 5x4 Classical Revival apartment building. The "Theresa", with
horizontal rusticated joints in brick at first story

WEST SIDE



300, 302-4, 306 Garden Street
neg. #: 7-25



302-04, 306 Garden Street
neg. #: 7-26

photo date: 9-5-78

WEST SIDE



308-10 Garden Street
neg. #: 7-27



312, 14, 16 Garden Street
neg. #: 7-28

photo date: 9-5-78

WEST SIDE



318, 20, 22 Garden Street
neg. #: 7-29



324, 26 (vacant, 28 (part) Garden Street
neg. #: 7-30

photo date:

WEST SIDE



328, 330 Garden Street
neg. #: 7-31



332-34 Garden Street
neg. #: 7-32

WEST SIDE



336, 338, 340 (340½) Garden Street
neg. #: 7-33



340, 342 Garden Street
neg. #: 7-34

photo date

EAST SIDE



335 Garden Street
neg. #: 9-29



341, 339, 337 Garden Street
neg. #: 9-30

EAST SIDE



327, 325, 323 Garden Street
neg. #: 9-27



333, 331, 329 Garden Street
neg. #: 9-28

photo date: 9-7-78

NEW JERSEY OFFICE OF HISTORIC PRESERVATION HISTORIC SITES INVENTORY # 9-25

INDIVIDUAL STRUCTURE SURVEY FORM

HISTORIC NAME: Public School #1
LOCATION: Third and Garden Streets

COMMON NAME: David E. Rue School
BLOCK/LOT: 190/1

MUNICIPALITY: Hoboken

COUNTY: Hudson

OWNER/ADDRESS:

ORIGINAL USE: School

PRESENT USE: school

USGS QUAD:

DESCRIPTION

Construction Date: 1913-cornerstone

Source of Date:

Architect:

Builder:

Style: Second Gothic Revival

Number of Stories: 4

Foundation:

Form/Plan Type:

Structural System:

Exterior Wall Fabric: Cream brick, stone, wood

Fenestration: five classrooms along Garden Street, three along Third Street

Entrance Location:

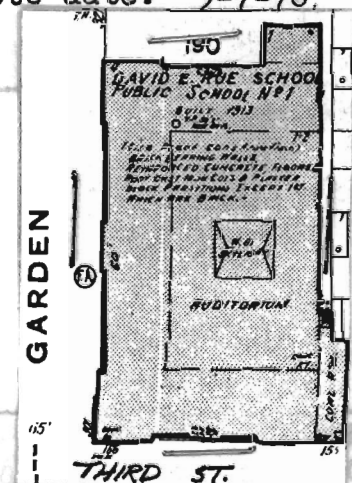
Roof/Chimneys:

Additional Architectural Description: Protruding stone ornament at top of building, stone panels at and above entry way; end classroom bays protruding outward; large elaborate iron gateway at north end of building.



MAP (Indicate North)

photo date: 9-7-78.



(609)292-2023

OFFICE OF HISTORIC PRESERVATION, 109 WEST STATE STREET, NEW JERSEY 08625

SITING AND RELATED STRUCTURES:

Comprises half of block on Garden Street; dominates and overbears on block.

SURROUNDING ENVIRONMENT: Open Space ☐ Woodland ☐ Scattered Buildings ☐
Suburban ☐ Urban ☐ Residential ☒ Agricultural ☐ Industrial ☐
Downtown Commercial ☐ Highway Commercial ☐ Other ☐

SIGNIFICANCE:

One of series of large public schools

Impressive in scale, the building is distinguished by the wealth of Gothic Revival ornamentation evident on each facade.

PHYSICAL CONDITION: Excellent ☐ Good ☒ Fair ☒ Poor ☐
REGISTER ELIGIBILITY: Yes ☒ Possible ☐ No ☐ As part of district ☒
THREATS TO STRUCTURE: Roads ☐ Development ☐ Zoning ☐ Deterioration ☐
No Threat ☒ Other ☐
COMMENTS:

Window frames are rotting in some places

REFERENCES:

RECORDED BY: Jeff Sholeen
ORGANIZATION: July 20, 1978
DATE:

(609)292-2023

NEW JERSEY OFFICE OF HISTORIC PRESERVATION HISTORIC SITES INVENTORY #
STREETSCAPE SURVEY FORM

STREET NAME: Garden St.
MUNICIPALITY: Hoboken

CROSS STREETS: Fourth and Fifth Sts.
COUNTY: Hudson

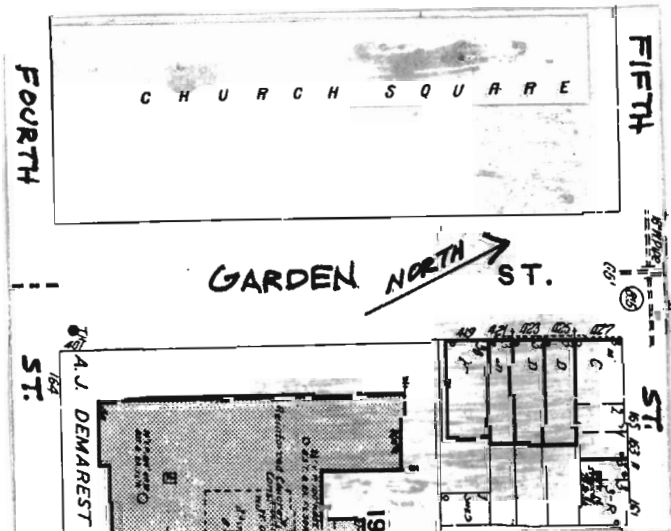
DESCRIPTION/SIGNIFICANCE:

East side: south half is almost entirely composed on the side facade of the elaborate, classical-revival, four-storey Demarest Junior High School. A metal fence stretches between the school and the middle of the block. The north end of the block has five, three storey rowhouses. The two houses at each end are three bays and altered; the three middle houses are relatively intact and of standard Italianate style.
West side: Church Square Park (see individual form)

PHYSICAL CONDITION OF SITES: Excellent 75% Good 25% Fair % Poor %
REGISTER ELIGIBILITY: Yes ☐ Possible ☐ No ☐ Part of larger district ☐
THREATS TO SITE: Roads ☐ Development ☐ Zoning ☐ Deterioration ☐
No Threat ☐ Other ☐
COMMENTS: school exterior is in excellent shape. Park is in fairly good condition, although cyclone fencing is extremely unattractive and chops up space.

REFERENCES:

MAP (Indicate North)



East side:

- 401-417- Demarest Junior High School (see individual form)
419- 3x3 size, but has paired windows in right bay. Altered fenestration, applied false brick wall surfacing, and intact cornice.
421-25 Three 3x2 units with altered first storey fenestration and entries. 423 also has altered third storey windows. Lintels are segmental arch type with upturned ends and edentils. Intact continuous cornice has paired braquettes over center of each unit and other lines between units.
427 3x3 rowhouse with painted brick facing Garden St. and with aluminum siding on Fifth Street facade. Casement windows in top two stories. Altered storefront in unpainted brick. Simple cornice.

West side:

Church Square Park (see individual form)

MAP (Indicate North)
by: J.P. Sholeen, summer, 1978
CDA

PHYSICAL CONDITION OF SITES: Excellent
REGISTER ELIGIBILITY: Yes [] Possible
THREATS TO SITES: Roads [] Development
No Threat [] Other []
COMMENTS: Good condition, no exterior alterations.

REFERENCES:

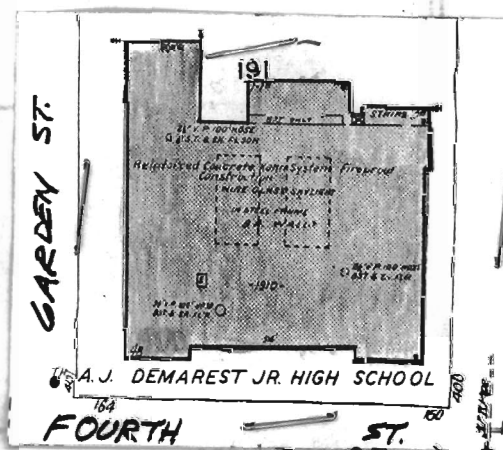
NEW JERSEY DEPARTMENT OF ENVIRONMENTAL PROTECTION, DIVISION OF LAND USE & FORESTRY
NEW JERSEY OFFICE OF HISTORIC PRESERVATION, 100 WEST STATE STREET, NEW JERSEY 08025

NEW JERSEY OFFICE OF HISTORIC PRESERVATION HISTORIC SITES INVENTORY # 9-31

INDIVIDUAL STRUCTURE SURVEY FORM

HISTORIC NAME:**LOCATION:** Fourth and Garden Streets**COMMON NAME:** A.J. Demarest Junior High**BLOCK/LOT:** 191/1**MUNICIPALITY:** Hoboken**COUNTY:** Hudson**OWNER/ADDRESS:****ORIGINAL USE:** School**PRESENT USE:** School**USGS QUAD:****DESCRIPTION****Construction Date:** 1911**Source of Date:** BIC**Architect:****Builder:****Style:****Number of Stories:** five**Foundation:****Form/Plan Type:****Structural System:****Exterior Wall Fabric:** Stone and yellow brick; grey painted brick on bottom flr.**Fenestration:** eight bays(s), nine bays(e)**Entrance Location:****Roof/Chimneys:**

Additional Architectural Description: Unique design of door colonettes and transoms; mosaic tile on tops of building corners; ornate railing at top of facade; three different designs of stone coursing between first and fourth floors; 15% angled columns on ends of facade detailing on fifth floor; pilasters between windows

**MAP (Indicate North)**

(609)292-2023

OFFICE HISTORIC PRESERVATION, 109 WEST STATE STREET, NEW JERSEY 08625

SITING AND RELATED STRUCTURES:

Residential on North, South and East sides; park on West side

SURROUNDING ENVIRONMENT: Open Space ☐ Woodland ☐ Scattered Buildings ☐
Suburban ☐ Urban ☐ Residential ☒ Agricultural ☐ Industrial ☐
Downtown Commercial ☐ Highway Commercial ☐ Other ☐

SIGNIFICANCE:

Ornate and well preserved facade; one of oldest public buildings in the City.

PHYSICAL CONDITION: Excellent ☒ Good ☐ Fair ☐ Poor ☐
REGISTER ELIGIBILITY: Yes ☐ Possible ☐ No ☐ As part of district ☒
THREATS TO STRUCTURE: Roads ☐ Development ☐ Zoning ☐ Deterioration ☐
No Threat ☒ Other ☐

COMMENTS:

Inside of building less well kept than exterior

REFERENCES:

RECORDED BY:
ORGANIZATION:
DATE:

EAST SIDE



425, 432, 421, 419
Garden St.
neg. # 9-32



David E. Rue School
321- 01 Garden St.
neg. # 9-24



427, 425 Garden Street
neg. #: 9-33

WEST SIDE



500, 504+ Garden Street
neg. #: 8-16

photo date: 9-5-78

NEW JERSEY OFFICE OF HISTORIC PRESERVATION HISTORIC SITES INVENTORY #
INDIVIDUAL STRUCTURE SURVEY FORMHISTORIC NAME: **Irving Place**
LOCATION: **506-536 Garden St.**COMMON NAME:
BLOCK/LOTMUNICIPALITY: **Hoboken**
USGS QUAD:
OWNER/ADDRESS:COUNTY: **Hudson**
UTM REFERENCES:
Zone/Northing/Easting

DESCRIPTION

Construction Date: **c. 1852**

Source of Date: (see refs.)

Architect:

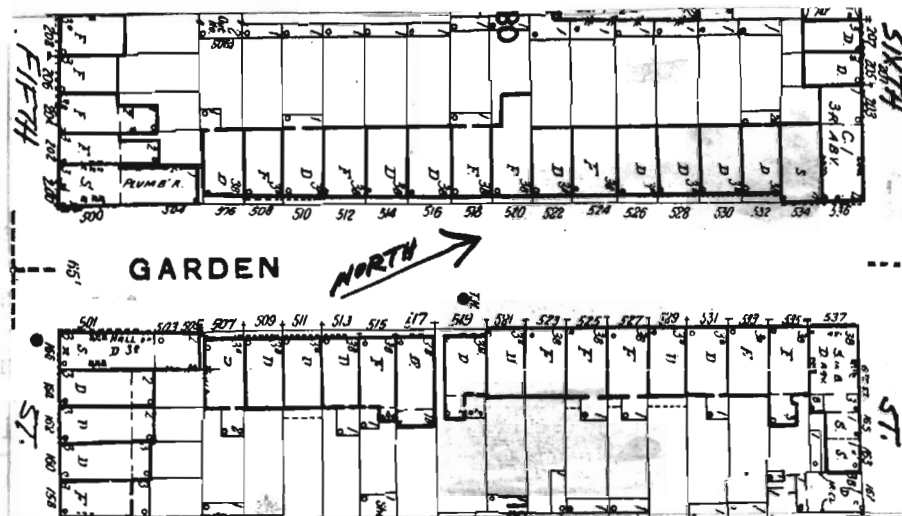
Builder: **Hoboken Land & Improvement Co.**Style: **Italianate**Form/Plan Type: **rectangular**Number of Stories: **4**Foundation: **brick**Exterior Wall Fabric: **red brick**Fenestration: **three bays across**Roof/Chimneys: **flat**

Additional Architectural Description:

all entries are up eight steps; doorways all to the right; most buildings retain their braquettted cornices of wood, flush stone lintels, stone water table coursing; intact cast-iron areaway fences at: #508,520; #520 may retain its original doors.

PHOTO Negative File #

Map (Indicate North)



SITING, BOUNDARY DESCRIPTION, AND RELATED STRUCTURES:

encompasses an entire block on the western side of Garden Street; buildings opposite are of similar style and scale, and also date from 1852.

SURROUNDING ENVIRONMENT: Urban ☒ Suburban ☐ Scattered Buildings ☐
Open Space ☐ Woodland ☐ Residential ☐ Agricultural ☐
Industrial ☐ Downtown Commercial ☐ Highway Commercial ☐ Other ☐

SIGNIFICANCE:

This block represents a good example of the spread of housing in Hoboken in the mid-nineteenth century, as it was constructed by the Hoboken Land & Improvement Company--a largely Stevens family-controlled development concern largely responsible for the growth of neighborhoods and their planning. The block, aside from cosmetic alterations which distract from its character (brick-face at #506 & 526) survives intact, and presents a cohesive streetscape.

The block is further distinguished as the home of a well-known and prolific lithographer--John Bachmann. He was active as a draftsman and lithographer from 1850 to 1877, and many of his prints are in major New York and New Jersey collections. His prints often bear this address, which was #9 Irving Place, Hoboken. This address was most likely the present #526.

ORIGINAL USE: residential

PRESENT USE: res./comm.

PHYSICAL CONDITION: Excellent ☐ Good ☒

Fair ☐ Poor ☐

REGISTER ELIGIBILITY: Yes ☒ Possible ☐

No ☐ Part of District ☐

THREATS TO SITE: Roads ☐ Development ☐

Zoning ☐ Deterioration ☒

No Threat ☐ Other ☐

COMMENTS:

REFERENCES:

City Map of Hoboken, published by J. Bevan, Civil Engineer & Surveyor (1851)
Map Showing the Lots of the Hoboken Land & Improvement Co. for Sale, published by order of the company (1852)
Birds Eye View of Hoboken, drawn from nature and on stone by J. Bachmann (1860)
all from the Stevens Family Papers Collection, N.J. Historical Society

RECORDED BY: Patricia Florio
ORGANIZATION: CDA

DATE: 6-2-81

WEST SIDE

506, 508, 510 Garden St.
neg. # 8-17



512, 514, 516 Garden St.
neg. # 8-18



518, 520, 522 Garden St.
neg. # 8-19

photo date: 9-5-78



WEST SIDE

524, 526, 528 Garden St.
neg. # 8-20



530, 532, 534 Garden St.
neg. # 8-21



534, 536 Garden St.
neg. # 8-22

photo date: 9-5-78



EAST SIDE



537, 535 Garden Street
neg. #: 10-4



533, 531, 529 Garden Street
neg. #: 10-3

photo date: 9-7-78

EAST SIDE



527, 525, 523 Garden Street
neg. #: 10-2



521, 519 Garden Street
neg. #: 10-1

photo date:

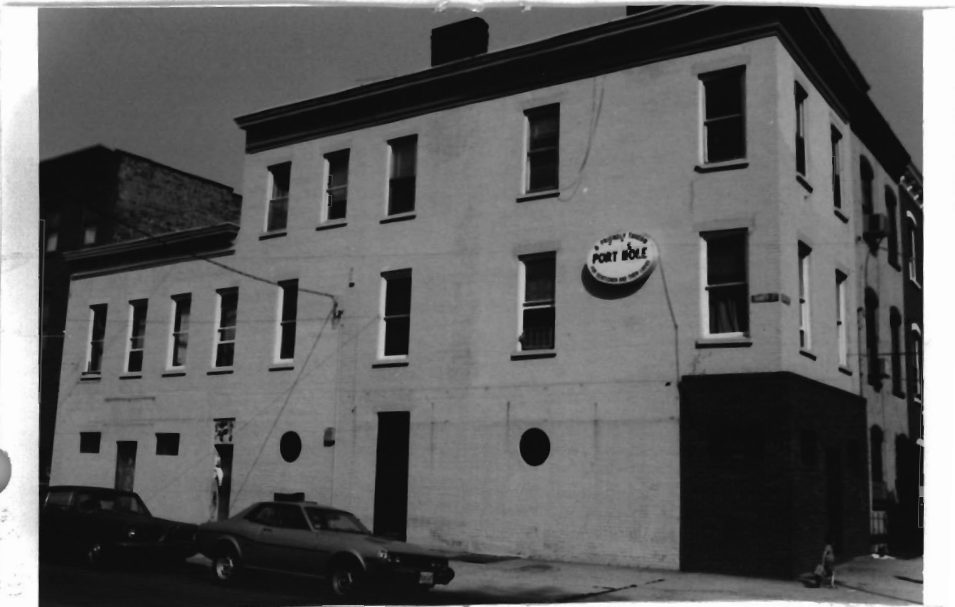
EAST SIDE



517, 515, 513 Garden Street
neg. #: 9-37



511, 509, 507 Garden Street
neg. #: 9-36



505-01 Garden Street
neg. #: 9-35

photo date: 9-7-78

NEW JERSEY OFFICE OF HISTORIC PRESERVATION HISTORIC SITES INVENTORY # 8-23

INDIVIDUAL STRUCTURE SURVEY FORM

HISTORIC NAME:
LOCATION: 600-04 Garden Street

COMMON NAME: The Community Church
BLOCK/LOT: 181/30

MUNICIPALITY: Hoboken
OWNER/ADDRESS:

COUNTY: Hudson

ORIGINAL USE: Church
USGS QUAD:

PRESENT USE: Church

DESCRIPTION

Construction Date:

Source of Date:

Architect:

Builder:

Style: Gothic Revival

Number of Stories: One

Foundation:

Form/Plan Type:

Structural System: Brick, painted tan

Exterior Wall Fabric:

Fenestration: Arched windows

Entrance Location:

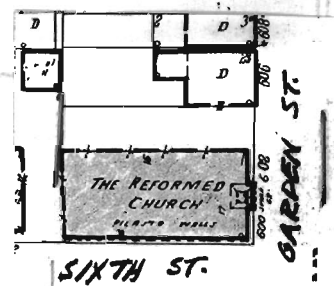
Roof/Chimneys: Metal steeple

Additional Architectural Description:

Tower protruding at entry; narrow lancet-type windows are in recessed panels; natural wood-finish door; intact fence; pilaster-like projections on sides.

photo date: 9-5-78

MAP (Indicate North)



(609)292-2023

OFFICE OF HISTORIC PRESERVATION, 109 WEST STATE STREET, NEWTON, NEW JERSEY 08625

SITING AND RELATED STRUCTURES:

In midst of three story row house blocks, small church yard with rectory (see form for 606 Garden Street) next door.

SURROUNDING ENVIRONMENT: Open Space ☐ Woodland ☐ Scattered Buildings ☐
Suburban ☐ Urban ☐ Residential ☒ Agricultural ☐ Industrial ☐
Downtown Commercial ☐ Highway Commercial ☐ Other ☐

SIGNIFICANCE:

PHYSICAL CONDITION: Excellent ☒ Good ☐ Fair ☐ Poor ☐
REGISTER ELIGIBILITY: Yes ☐ Possible ☐ No ☐ As part of district ☒
THREATS TO STRUCTURE: Roads ☐ Development ☐ Zoning ☐ Deterioration ☐
No Threat ☒ Other ☐
COMMENTS:

REFERENCES: Jeff Sholeen
August 1, 1978

RECORDED BY:
ORGANIZATION:
DATE:

NEW JERSEY OFFICE OF HISTORIC PRESERVATION HISTORIC SITES INVENTORY # 8-24

INDIVIDUAL STRUCTURE SURVEY FORM

HISTORIC NAME:
LOCATION: 606 Garden Street

COMMON NAME: Rectory-Community Church
BLOCK/LOT: 181/30

MUNICIPALITY: Hoboken
OWNER/ADDRESS:

COUNTY: Hudson

ORIGINAL USE: Rectory
USGS QUAD:

PRESENT USE: Rectory

DESCRIPTION

Construction Date:

Source of Date:

Architect:

Builder:

Style: Gothic revival on Vern.

Number of Stories: Two and attic

Foundation:

Form/Plan Type:

Structural System:

Exterior Wall Fabric: Brick, painted tan, stone trim

Fenestration: Four bays

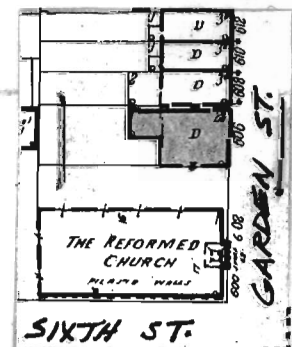
Entrance Location:

Roof/Chimneys:

Additional Architectural Description: Double Door, intact with transom and pedimented lintel; Gothic arched windows in steeply roofed dormers; intact fence, stair rail

photo date: 8-24

MAP (Indicate North)



SITING AND RELATED STRUCTURES:

Next to church yard - three story row buildings abut rectory on north side

SURROUNDING ENVIRONMENT: Open Space ☐ Woodland ☐ Scattered Buildings ☐
Suburban ☐ Urban ☐ Residential ☒ Agricultural ☐ Industrial ☐
Downtown Commercial ☐ Highway Commercial ☐ Other ☐

SIGNIFICANCE:

Companion piece to Community Church

PHYSICAL CONDITION: Excellent ☐ Good ☒ Fair ☒ Poor ☐
REGISTER ELIGIBILITY: Yes ☐ Possible ☐ No ☐ As part of district ☒
THREATS TO STRUCTURE: Roads ☐ Development ☐ Zoning ☐ Deterioration ☐
No Threat ☒ Other ☐
COMMENTS:

Roof sags in middle - may need major repair

REFERENCES:

RECORDED BY: Jeff Sholeen
ORGANIZATION: August 1, 1978
DATE:

WEST SIDE



612, 614, 616 Garden Street
neg. #: 8-25



618, 620, 622 Garden Street
neg. #: 8-26



624, 626, 628 Garden Street
neg. #: 8-27

photo date: 9-5-78

WEST SIDE



630, 632, 634, 636 Garden Street
neg. #: 8-28



638, 640 Garden Street
neg. #: 8-29

EAST SIDE



647, 645 Garden Street
neg. #: 10-13



635 Garden Street
neg. #: 10-11

HISTORIC NAME: Congregation Adas Emuno
LOCATION: 637 GARDEN STREET

COMMON NAME: IGLESIA ALIANZA CRISTIANA
BLOCK/LOT: 193/23 MISIONERA

MUNICIPALITY: HOBOKEN

COUNTY: HUDSON

OWNER/ADDRESS: IGLESIA ALIANZA

CRISTIANAY MISIONERA

ORIGINAL USE: SYNAGOGUE

PRESENT USE: PROTESTANT CHURCH/HISPANIC
COMMUNITY CENTER

USGS QUAD:

DESCRIPTION

Construction Date: C.1883

Source of Date: The Bicentennial Comes
to Hoboken

Architect: -- unknown

Builder:

Style: Gothic Revival

Number of Stories: 2 with high basement

Foundation: rubble stone

Form/Plan Type: rectangular

Structural System: brick bearing walls

Exterior Wall Fabric: Stucco over brick

Fenestration: 2 lancet windows flank central pointed arch door, triple
round arched windows above

Entrance Location: gable facade

Roof/Chimneys: gable--one original chimney

Additional Architectural Description: Intact Star of David Motif in windows
and towers; original door intact. Also, grand staircase leading to main
entry is wider at sidewalk and tapers at entry to building.

Wide front stairs lead to a central front door and two
front windows. Floor level is about 10' high from sidewalk level.

Original interior windows are intact and in excellent condition.

Very high ceiling in its original round shape.



MAP (Indicate North)



637 GARDEN ST

photo date: 9-7-78

637 (PANEL), 637 (CHURCH), 637 (CORN. NO.), 641 GARDEN

(609)292-133

OFFICE OF HISTORIC PRESERVATION, 109 WEST STATE STREET, TRENTON, NEW JERSEY 08625

Set back 15' from curb line; #639 Garden Street was acquired some time after 1883 for use as a community house.

the site is approximately 25' by 100'; the main structure occupies almost 100% of the lot. Low apartment houses are located across and next to the structure.

SURROUNDING ENVIRONMENT: Open Space ☐ Woodland ☐ Scattered Buildings ☐
Suburban ☐ Urban ☐ Residential ☒ Agricultural ☐ Industrial ☐
Downtown Commercial ☐ Highway Commercial ☐ Other ☐

SIGNIFICANCE:

A unique structure in which the Gothic Revival Style was used for non-Christian use. The building is an excellent example of the Gothic Revival Style and retains all of its original features. Housed the oldest Jewish congregation in Hudson County. Founded on October 22, 1871.

PHYSICAL CONDITION: Excellent ☒ Good ☐ Fair ☐ Poor ☐
REGISTER ELIGIBILITY: Yes ☐ Possible ☐ No ☐ As part of district ☐
THREATS TO STRUCTURE: Roads ☐ Development ☐ Zoning ☐ Deterioration ☐
No Threat ☐ Other ☐
COMMENTS:

REFERENCES: J. Heany THE BICENTENNIAL COMES TO HOBOKEN

Scrapbook of TEMPLE ADATH EMUNO is in the possession of Reverend Fernando Colon, Director of Hispanic Affairs, County of Hudson (792-0355, Jersey City)

RECORDED BY: Patricia Florio / Jose David Vargas, P.E., Civil Engineer
ORGANIZATION: Hoboken CDA
DATE: 9/79 1/21/80

EAST SIDE



633, 631, 629 Garden Street
neg. #: 10-10



627, 625, 623, 621 Garden Street
neg. #: 10-9

photo date: 9-7-78

EAST SIDE



621, 619, 617, 615 Garden Street
neg. #: 10-8



613, 611, 609, 607 Garden Street
neg. #: 10-7

photo date: 9-7-78

EAST SIDE



605 Garden Street
neg. #: 10-6



603, 601 Garden Street
neg. #: 10-5

photo date: 9-7-78

NEW JERSEY OFFICE OF HISTORIC PRESERVATION HISTORIC SITES INVENTORY #
STREETSCAPE SURVEY FORMSTREET NAME: Garden St.
MUNICIPALITY: HobokenCROSS STREETS: Seventh & Eighth Sts.
COUNTY: Hudson

DESCRIPTION/SIGNIFICANCE:

There are a large number of 3x3 high basement Italianate rowhouses. More than half of these have segmental arch lintels. The west side is much more uniform in terms of having most of the 3x3's and basically consistent height and red brick facades. The east side has a range of five 3x2 two rowhouses interspersed with some 3x3 rowhouses, two garages at the north end of the block, two four-storey tenements, a bay-fronted rowhouse, an altered storefront and one vacant lot. The overall appearance of jagged scale is thereby less homogeneous than that of the west side. Intact details:

stair rails-702-710; 713-717, 720-24, 728-30, 734, 738
fences-702, 4, 15, 20; 722, 24, 27, 28, 30, 32
first storey window grilles-706, 710
second storey window grilles-715, 21
doors-700, 6, 10, 11, 15, 28, 30, 40

PHYSICAL CONDITION OF SITES: Excellent % Good % Fair % Poor %
REGISTER ELIGIBILITY: Yes [] Possible [] No [] Part of larger district []
THREATS TO SITE: Roads [] Development [] Zoning [] Deterioration []
No Threat [] Other []
COMMENTS:

REFERENCES:

MAP (Indicate North)

WEST SIDE



700, 02, 04, 06 Garden St.
neg. #: 8-30



708, 10, 12 Garden St.
neg. #: 8-31

WEST SIDE



714, 16, 18 Garden St.
neg. #: 8-32



720, 22, 24 Garden St.
neg. #: 8-33

WEST SIDE



726, 28, 30 Garden St.
neg. #: 8-34



732, 34, 36 Garden St.
neg. #: 8-35



738, 40, 42 Garden St.
neg. #: 8-36

photo date: 9-5-78

EAST SIDE



743,741-39 Garden St.
neg. # 13-22



737,35 Garden St.
neg. # 13-21

photo date: 10-7-78

EAST SIDE



733,731 Garden St.
neg. # 13-20



729,727 Garden St.
neg. # 13-19

photo date: 10-7-78

EAST SIDE



725 (part), 723, 721, 719, 717 (part) Garden Street
neg. #: 13-17



725 Garden Street
neg. #: 13-18

EAST SIDE



723, 21, 19, 17, 15 Garden St.
neg. # 13-16



715, 13, 11 Garden St.
neg. # 13-15

photo date: 10-7-78

EAST SIDE



709,707 Garden St.
neg. # 13-14



703,701 Garden St.
neg. # 13-13

photo date: 10-7-78

WEST SIDE



800, 02, 04 Garden St.
neg. #: 11-1



802, 04, 06 Garden St.
neg. #: 11-2



808, 10 Garden St.
neg. #: 11-3

WEST SIDE



812, 14, 16, 18 Garden St.
neg. #: 11-4



820, 22 24 Garden St.
neg. #: 11-5

WEST SIDE



826, 28, 30 (part) Garden St.
neg. #: 11-6



Joseph Brandt
(Public School #2)
830-42 Garden St.
neg. #: 11-7

EAST SIDE



849, 847, 845, 843, 841 Garden St.
neg. #13-33

photo date: 10/7-78

EAST SIDE



845,43,41,39 Garden St.
neg. # 13-32



837,35,33,31 Garden St.
neg. # 13-30

photo date: 10-7-78

EAST SIDE



829,827 Garden St.
neg. # 13-29



827,25,23 Garden St.
neg. # 13-28

photo date: 10-7-78

EAST SIDE

821,19,17,15 Garden St.
neg. # 13-27



813,11 Garden St.
neg. # 13-26



photo date: 10-7-78

EAST SIDE

809-07 Garden St.
neg. # 13-25



805,03,01 Garden St.
neg. # 13-23



805,03 Garden St.
neg. # 13-24

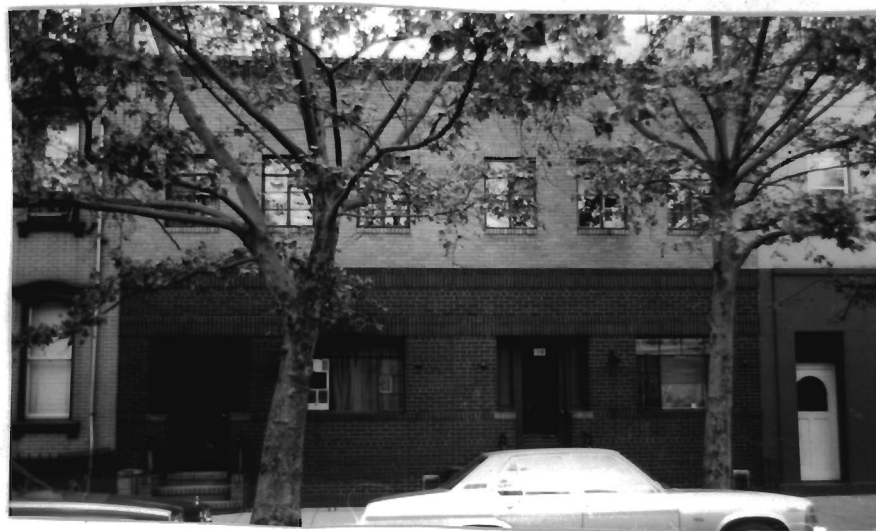


photo date: 10-7-78

WEST SIDE



900, 902, 904, 906 Garden St.
neg. #11-8



904, 906, 908 Garden St.
neg. #11-9

WEST SIDE



910, 912, 914 Garden St.
neg. #11-10



916-922 Garden St.
neg. #11-11

photo date: 10/7/78

WEST SIDE



924, 926, 928, 930 Garden St.
neg. #11-12



930, 932, 934 Garden St.
neg. #11-13

WEST SIDE



934, 936 Garden St.
neg. #11-14

photo date: 10/7/78

EAST SIDE



941,39,37,35 Garden St.
neg. # 6-33



935,933 Garden St.
neg. # 6-34

photo date: 8-14-78

EAST SIDE



931 Garden St.
neg. # 6-35



927, 925 Garden St.
neg. # 6-37

photo date: 8-14-78

EAST SIDE



923 Garden St.
neg. # 14-2



921,919 Garden St.
neg. # 14-1

photo date: 10-7-78

EAST SIDE



915, 913 Garden St.
neg. # 13-37



911, 09, 07, 05 Garden St.
neg. # 13-36

photo date: 10-7-78

EAST SIDE



911, 909, 907, 905, 903, 901 Garden St.
neg. #13-34



905, 903 Garden St.
neg. #13-35

photo date: 10/7/78

WEST SIDE



1000,1002,1004 Garden Street
(VFW Hall at 1000-02)
neg. #11-15



1004,1006,1008 Garden St.
neg. #11-16

WEST SIDE



1010, 1012, 1014 Garden St.
neg. #11-17



1016, 1018, 1020 Garden St.
neg. #11-18



1022,1024,1026 Garden St.
neg. # 11-19



1028,1020,1032 Garden St.
neg. # 11-20



1034, 1036 Garden St.
neg. # 11-21



1038 Garden St.
neg. # 11-22

Photo Date: 10-7-78

EAST SIDE



corner, 11th St. & Garden St.
neg. # 6-24



1037, 35 Garden St.
neg. # 6-25

photo date: 8-14-78



1019, 1017, 1015 Garden St.
neg. #6-29



1013, 1011 Garden St.
neg. #6-30

EAST SIDE



1009, 1007, 1005 Garden St.
neg. #6-31



1003, 1001 Garden St.
neg. #6-32



1100 (04) Garden St.
neg. # 11-23



1106, 1108, 1110 Garden St.
neg. # 11-24

Photo Date: 10-7-78



1110,1112,1114 Garden St.
neg. # 11-25



1116,1118,1120,1122 Garden St.
neg. # 11-26

Photo Date: 10-7-78



1120 (part) 1122,1124,1126 Garden St.
neg. # 11-27



1128,1130 Garden St.
neg. # 11-28



1132,1134,1136 Garden St.
neg. # 11-29



1136,1138,1140 Garden St.
neg. # 11-30

EAST SIDE

1145,43 Garden St.
neg. # 6-16



1141,39,37 Garden St.
neg. # 6-17



1135,33,31,29 Garden St.
neg. # 6-18



photo date: 8-14-78

EAST SIDE



1033, 31 Garden St.
neg. # 6-26



1029, 27, 25 Garden St.
neg. # 6-27

1023, 21 Garden St.
neg. # 6-28

photo date: 6-28



EAST SIDE

1127,25,23 Garden St.
neg. # 6-19



1121,19,17 Garden St.
neg. # 6-20



1115,13,11 Garden St.
neg. # 6-21

photo date: 8-14-78



EAST SIDE

1103, 1101 Garden St.
neg. # 6-23



photo date: 8-14-78



1200,1202,1204,1206,1208 Garden St.
neg. # 11-31



1204,1206,1208,1210 Garden St.
neg. # 11-32



1212,1214,1216,1218 Garden St.
neg. # 11-33



1220,1222,1224,1226 Garden St.
neg. # 11-34

Photo Date: 10-7-78



1228,1230,1232,1234 Garden St.
neg. # 11-35



1236,1238,1240,1242 Garden St.
neg. # 11-36

Photo Date: 10-7-78



1244, 1246, 1248, 1250 Garden St.
neg. # 12-1



1252, 1254 Garden St.
neg. # 12-2

Photo Date: 10-7-78

EAST SIDE

1253, 51, 49, 47 Garden St.
neg. # 6-6



1247, 45, 43 Garden St.
neg. # 6-7



1241, 39, 37 Garden St.
neg. # 6-8

photo date: 8-14-78



EAST SIDE



1235,33,31 Garden St.
neg. # 6-9



1229,27 Garden St.
neg. # 6-10

photo date: 8-14-78

EAST SIDE



1225, 23 Garden St.



1221, 19, 17 Garden St.
neg. # 6-12

photo date: 8-14-78

EAST SIDE



1215, 1213 Garden St.
neg. # 6-13



1211, 1209 Garden St.
neg. # 6-14



1207, 05, 03, 01 Garden St.
neg. # 6-15

photo date: 8-14-78



1300,1302,1304,1306 Garden St.
neg. # 12-3



1304,1306,1308 Garden St.
neg. # 12-4

Photo Date: 10-7-78



1310,1312,1314 Garden St.
neg. # 12-5



1312,1314,1316 Garden St.
neg. # 12-6

Photo Date: 10-7-78

EAST SIDE



1319 to corner
neg. # 6-2



1317, 15, 13 Garden St.
neg. # 6-3

photo date: 8-14-78

EAST SIDE

1311,09,07 Garden St.
neg. #6-4



1305,03,01 Garden St.
neg. # 6-5



photo date: 8-14-78